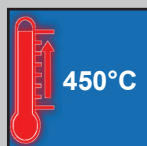


Heating mantle | round flasks

for spherical flasks, integrated controller, up to 450°C



1,000 ml round flask heating mantle

WHM for round flasks, 100°C-450°C integrated controller

Ideal for:

- spherical flasks 50 - 20,000 ml

Features:

- full choice of vessel, capacity, housing and control are offered
- nickel chrome heating element
- coil type: acid-resistant, long life time
- all kinds of round flasks can be used (Duran®/Kimax/Pyrex/Iwaki)
- CE certified and unique serial number for tracing

Controller:

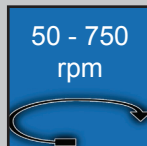
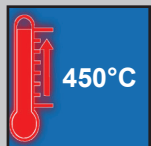
- built-in *temperature controller*

Application (flask brand)	Flask capacity (ml)	Flask Ø (mm)	Watts (W)	Inside depth (mm)	Mantle outside Ø x H mm	Support rod Ø x H mm	Order number	
							with 230V	with 120V
common-use	50	49 - 52	80	40	Ø 145 x 140	Ø 13 x 440	DH.WHM12010	DH.WHM12020
common-use	100	63 - 66	80	40	Ø 145 x 140	Ø 13 x 440	DH.WHM12011	DH.WHM12021
common-use	250	83 - 86	140	50	Ø 145 x 140	Ø 13 x 440	DH.WHM12012	DH.WHM12022
common-use	500	102 - 105	240	65	Ø 190 x 165	Ø 13 x 440	DH.WHM12013	DH.WHM12023
common-use	1,000	130 - 133	350	75	Ø 190 x 165	Ø 13 x 440	DH.WHM12014	DH.WHM12024
for DU./Iw.	2,000	165 - 169	450	100	Ø 270 x 200	Ø 13 x 660	DH.WHM12015	DH.WHM12025
for Ki./Py.	2,000	161 - 164	450	100	Ø 270 x 200	Ø 13 x 660	DH.WHM120151	DH.WHM120251
for DU./Ki.	3,000	184 - 187	550	105	Ø 270 x 200	Ø 13 x 660	DH.WHM12016	DH.WHM12026
common-use	5,000	221 - 224	800	131	Ø 325 x 226	Ø 13 x 800	DH.WHM12017	DH.WHM12027
for DU./Ki.	6,000	234 - 237	800	131	Ø 325 x 226	Ø 13 x 800	DH.WHM12018	DH.WHM12028
for DU.	10,000*	278 - 282	1400	150	Ø 390 x 240	Ø 13 x 800	DH.WHM12019	DH.WHM12029
for DU.	20,000*	344 - 348	2000	200	Ø 470 x 260	Ø 13 x 800	DH.WHM12070	DH.WHM12071

*-marks: 10,000 ml & 20,000 ml mantle steel case - magnetic stirring is not available
Remarks: DU. = Duran®, Ki. = Kimax, Iw. = Iwaki, Py. = Pyrex

Heating mantle | round flasks

for spherical flasks, integrated magnetic stirrer and controller, up to 450°C



1.000 ml round flask heating mantle

WHM for round flasks, 100°C-450°C with built-in magnetic stirrer integrated controller

Ideal for:

- spherical flasks 50 - 6,000 ml

Features:

- full choice of vessel, capacity, housing and control are offered
- nickel chrome heating element
- coil type: acid-resistant, long life time
- built-in temperature controller
- all kinds of round flasks can be used (Duran®/Kimax/Pyrex/Iwaki)
- CE certified and unique serial number for tracing

Controller:

- built-in *stirring and temperature controller*



2x stirrer bars included

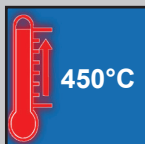
Application (flask brand)	Flask capacity (ml)	Flask Ø (mm)	Watts (W)	Inside depth (mm)	Mantle outside Ø x H mm	Support rod Ø x H mm	Order number	
							with 230V	with 120V
common-use	50	49 - 52	80	40	Ø 145 x 140	Ø 13 x 440	DH.WHM12030	DH.WHM12040
common-use	100	63 - 66	80	40	Ø 145 x 140	Ø 13 x 440	DH.WHM12031	DH.WHM12041
common-use	250	83 - 86	140	50	Ø 145 x 140	Ø 13 x 440	DH.WHM12032	DH.WHM12042
common-use	500	102 - 105	240	65	Ø 190 x 165	Ø 13 x 440	DH.WHM12033	DH.WHM12043
common-use	1,000	130 - 133	350	75	Ø 190 x 190	Ø 13 x 440	DH.WHM12034	DH.WHM12044
for DU./Iw.	2,000	165 - 169	450	100	Ø 270 x 200	Ø 13 x 660	DH.WHM12035	DH.WHM12045
for Ki./Py.	2,000	161 - 164	450	100	Ø 270 x 200	Ø 13 x 660	DH.WHM120351	DH.WHM120451
for DU./Ki.	3,000	184 - 187	550	105	Ø 270 x 200	Ø 13 x 660	DH.WHM12036	DH.WHM12046
common-use	5,000	221 - 224	800	131	Ø 325 x 226	Ø 13 x 800	DH.WHM12037	DH.WHM12047
for DU./Ki.	6,000	234 - 237	800	131	Ø 325 x 226	Ø 13 x 800	DH.WHM12038	DH.WHM12048

Remarks: DU. = Duran®, Ki. = Kimax, Iw. = Iwaki, Py. = Pyrex

Accessories: Magnetic stirrer bars can be found on page 28

Heating mantle | round flasks

for spherical flasks, external controller available, up to 450°C



WHM for round flasks, 450°C for use with external controller

Ideal for:

- spherical flasks 50 - 6,000 ml
- use with magnetic stirrer

Features:

- full choice of vessel, capacity, housing and control are offered
- highly processed aluminium case offers robust standing, easy handling
- nickel chrome heating element
- coil type: acid-resistant, long life time
- K-type thermo sensor is basically embedded
- CE certified and unique serial number for tracing

Controller:

- optional remote thermo controllers are available (analog: WHM-C10A, digital: WHM-C10D)



1.000 ml round flask heating mantle



WHM-C10D
digital controller



WHM-C10A
analog controller

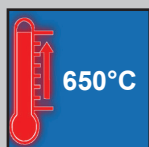
Application (flask brand)	Flask capacity (ml)	Flask Ø (mm)	Watts (W)	Inside depth (mm)	Mantle outside Ø x H mm	Support rod Ø x H mm	Order number	
							with 230V	with 120V
common-use	50	49 - 52	80	48	Ø 145 x 75	Ø 13 x 440	DH.WHM12050	DH.WHM12060
common-use	100	63 - 66	80	50	Ø 145 x 75	Ø 13 x 440	DH.WHM12051	DH.WHM12061
common-use	250	83 - 86	140	50	Ø 145 x 75	Ø 13 x 440	DH.WHM12052	DH.WHM12062
common-use	500	102 - 105	240	85	Ø 190 x 110	Ø 13 x 440	DH.WHM12053	DH.WHM12063
common-use	1,000	130 - 133	350	85	Ø 190 x 110	Ø 13 x 440	DH.WHM12054	DH.WHM12064
for DU./Iw.	2,000	165 - 169	450	110	Ø 270 x 135	Ø 13 x 660	DH.WHM12055	DH.WHM12065
for Ki./Py.	2,000	161 - 164	450	110	Ø 270 x 135	Ø 13 x 660	DH.WHM120551	DH.WHM120651
for DU./Ki.	3,000	184 - 187	550	110	Ø 270 x 135	Ø 13 x 660	DH.WHM12056	DH.WHM12066
common-use	5,000	221 - 224	800	140	Ø 325 x 165	Ø 13 x 800	DH.WHM12057	DH.WHM12067
for DU./Ki.	6,000	234 - 237	800	140	Ø 325 x 165	Ø 13 x 800	DH.WHM12058	DH.WHM12068

Remarks: DU. = Duran®, Ki. = Kimax, Iw. = Iwaki, Py. = Pyrex

Accessories: Remote controller and temperature probes on page 46

Heating mantle | round flasks

for spherical flasks, external controller available, up to 650°C



1.000 ml round flask heating mantle

WHM for round flasks, 650°C

for use with external controller
high maximal temperature

Ideal for:

- spherical flasks 100 - 10,000 ml
- use with magnetic stirrer

Features:

- full choice of vessel, capacity, housing and control are offered
- highly processed aluminium case offers robust standing, easy handling
- nickel chrome heating element
- coil type: acid-resistant, long life time
- K-type thermo sensor is basically embedded
- CE certified and unique serial number for tracing

Controller:

- optional remote thermo controllers are available (analog: WHM-C10A, digital: WHM-C10D)



WHM-C10D
digital controller



WHM-C10A
analog controller

Application (flask brand)	Flask capacity (ml)	Flask Ø (mm)	Watts (W)	Inside depth (mm)	Mantle outside Ø x H mm	Support rod Ø x H mm	Order number	
							with 230V	with 120V
common-use	100	63 - 66	120	50	Ø 145 x 75	Ø 13 x 440	DH.WHM12091	DH.WHM12101
common-use	250	86 - 86	200	50	Ø 145 x 75	Ø 13 x 440	DH.WHM12092	DH.WHM12102
common-use	500	102 - 105	350	60	Ø 190 x 85	Ø 13 x 440	DH.WHM12093	DH.WHM12103
common-use	1,000	130 - 133	450	85	Ø 190 x 110	Ø 13 x 440	DH.WHM12094	DH.WHM12104
for DU./lw.	2,000	165 - 169	600	110	Ø 270 x 135	Ø 13 x 660	DH.WHM12095	DH.WHM12105
for Ki./Py.	2,000	161 - 164	600	110	Ø 270 x 135	Ø 13 x 660	DH.WHM120951	DH.WHM121051
for DU./Ki.	3,000	184 - 187	700	110	Ø 270 x 135	Ø 13 x 660	DH.WHM12096	DH.WHM12106
common-use	5,000	221 - 224	1200	140	Ø 325 x 165	Ø 13 x 800	DH.WHM12097	DH.WHM12107
for DU./Ki.	6,000	234 - 237	1200	140	Ø 325 x 165	Ø 13 x 800	DH.WHM12098	DH.WHM12108
for DU.	10,000*	278 - 282	1800*	160	Ø 390 x 240	Ø 13 x 800	DH.WHM12099	DH.WHM12109*

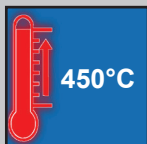
* DH.WHM12109 is offered with 1 Phase 120V power cable
 ♦ 10,000 ml mantle steel case - magnetic stirring is not available

Remarks: DU. = Duran®, Ki. = Kimax, lw. = lwaki, Py. = Pyrex

Accessories: Remote controller and temperature probes on page 46

Heating mantle | round flasks

for big spherical flasks up to 20 L, external controller available, up to 450°C



WHM for big round flasks, 450°C for use with external controller for 10 & 20 l flasks

Ideal for:

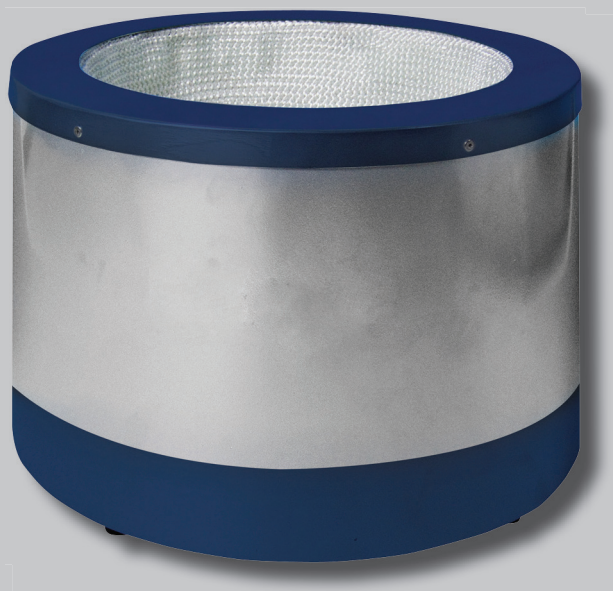
- big spherical flasks

Features:

- steel case, magnetic stirring is not available
- full choice of vessel, capacity, housing and control are offered
- nickel chrome heating element
- coil type: acid-resistant, long life time
- K-type thermo sensor is basically embedded
- CE certified and unique serial number for tracing

Controller:

- optional remote thermo controllers are available (analog: WHM-C10A, digital: WHM-C10D)



10l round flask heating mantle



WHM-C10D
digital controller



WHM-C10A
analog controller

Application (flask brand)	Flask capacity (l)	Flask Ø (mm)	Watts (W)	Inside depth (mm)	Mantle outside Ø x H mm	Support rod Ø x H mm	Order number	
							with 230V	with 120V
for DU.	10	278 - 282	1400	160	Ø 390 x 240	Ø 13 x 800	DH.WHM12073	DH.WHM12083
for DU.	20	344 - 348	2000	200	Ø 470 x 260	Ø 13 x 800	DH.WHM12074	DH.WHM12084*

* DH.WHM12084 is offered with 1 Phase 120V power cable

Remarks: DU. = Duran®, Ki. = Kimax, Iw. = Iwaki, Py. = Pyrex

Accessories: Remote controller and temperature probes on page 46